

ENGINEERING RESPONSIBILITY



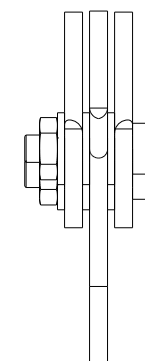
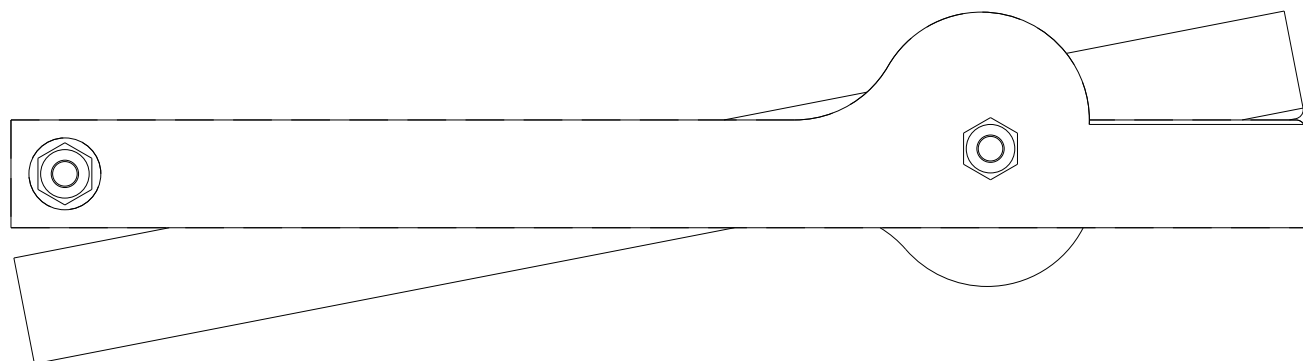
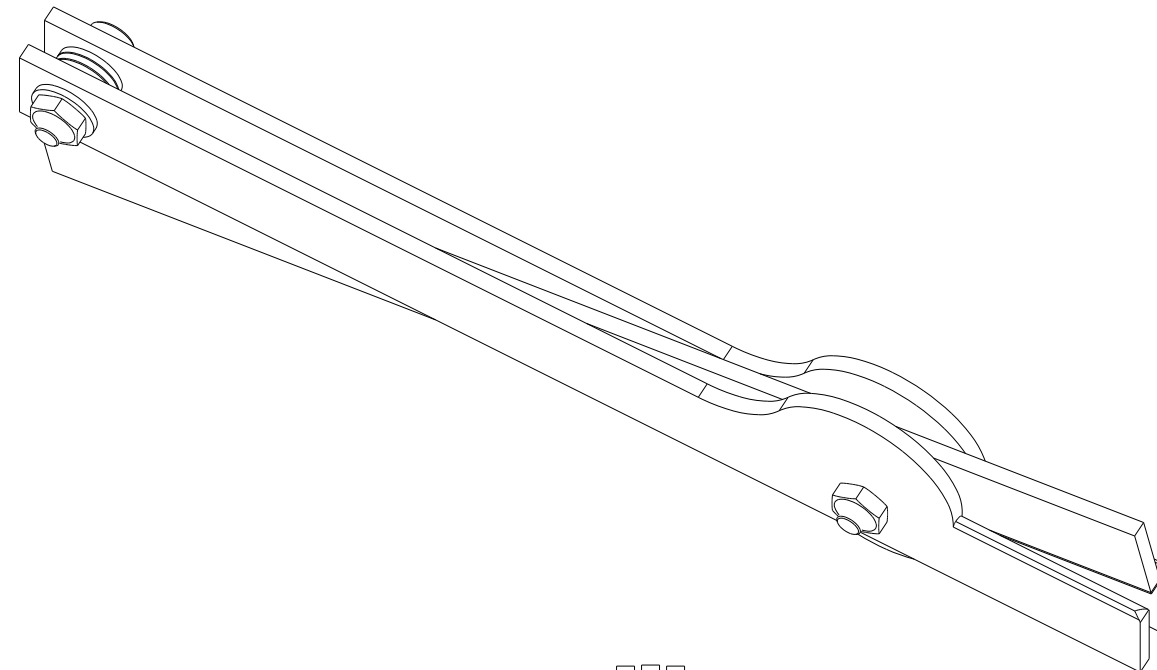
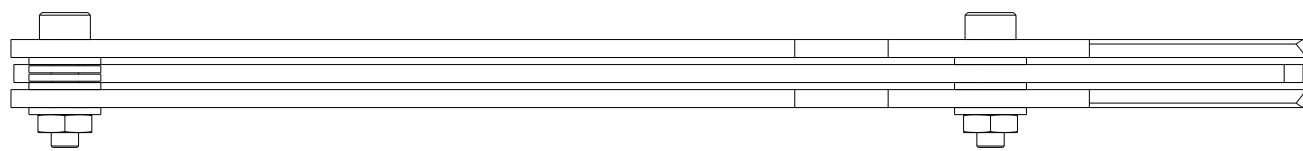
SEPIA



FLUTING PLIERS

11									
----	--	--	--	--	--	--	--	--	--

SYM	REVISIONS	APPROVED	DATE
1	AS ISSUED	T. MCHENRY	00/04/17
2	TAIL-END SCREW ADDED	T. MCHENRY	00/06/08



DO NOT SCALE THIS DRAWING

2. SUGGESTED HARDWARE:

- #10 X 3/4 CAP SCREW
- #10 NYLOCK NUT

1. REFER TO SHT 2 FOR LEAF DETAILS.

NOTES: (UNLESS OTHERWISE SPECIFIED)

UNLESS OTHERWISE SPECIFIED		1	A/R	PART/MATERIAL DESCRIPTION		-	-	
<ul style="list-style-type: none"> DIMENSIONS ARE IN MILLIMETRES THIRD ANGLE PROJECTION TOLERANCES 		ITEM	QTY.	PART/MATERIAL-DESCRIPTION		MAT'L-PART NO.	MATL-DWG NO.	MATL-SPEC.
STRIKE OUT OR FILL IN AS NEEDED		T. MCHENRY		00/04/17		FLUTING PLIERS ASSEMBLY		Van's Air Force Western Canada Wing
		DRAWN BY		DATE				
		ENGINEER/CHECKER						
		RELEASE TO PROD.		TITLE		PART NUMBER		
00/04/17 SD ANNOTATOR		FILE REVISED BY		3/4		1	2	FLUTING PLIERS
				SCALE		SHEET	OF	