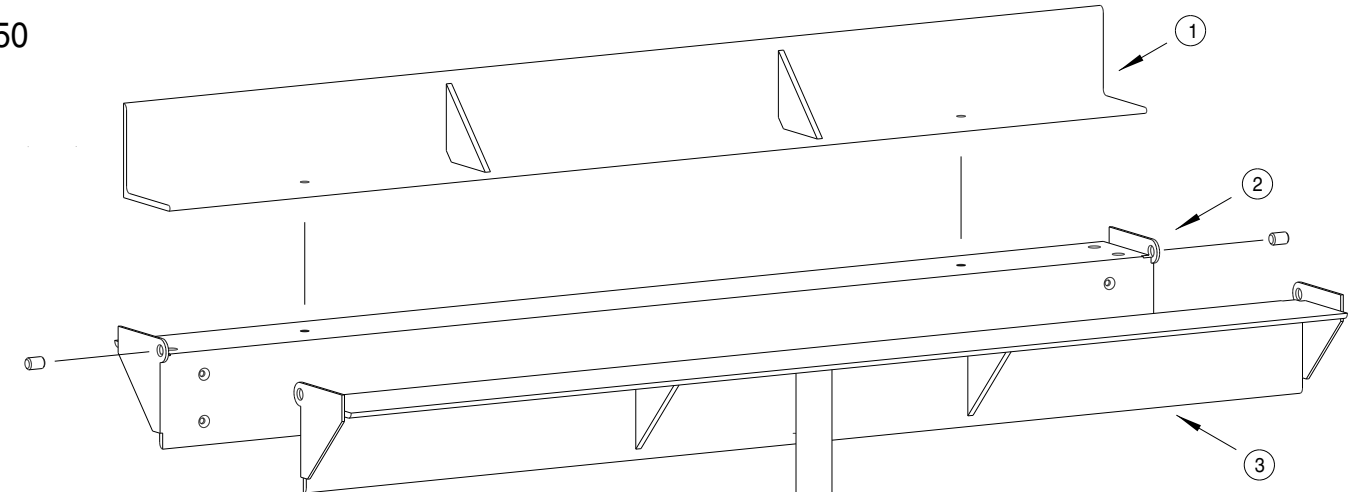
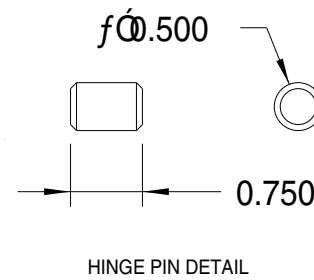
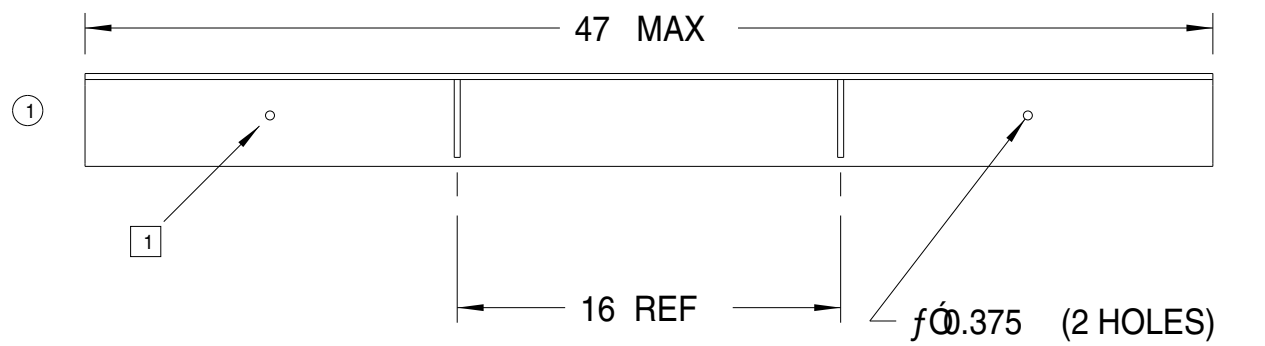


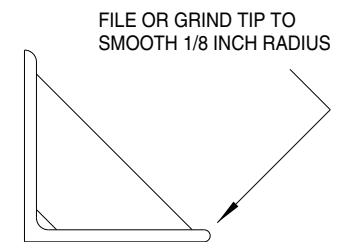
**B - BRAKE-1**

SYM	REVISIONS	APPROVED	DATE

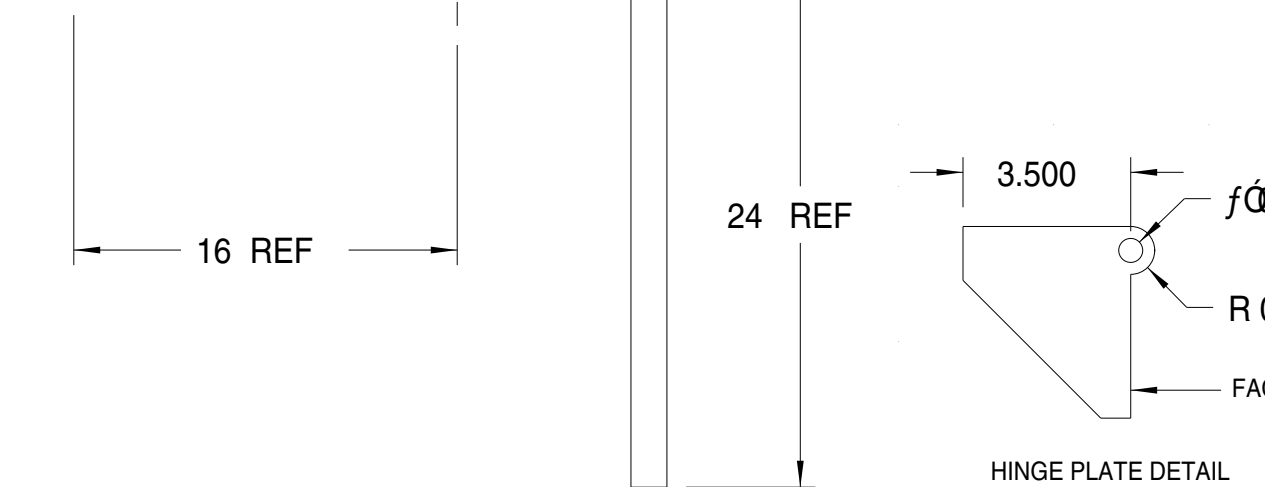
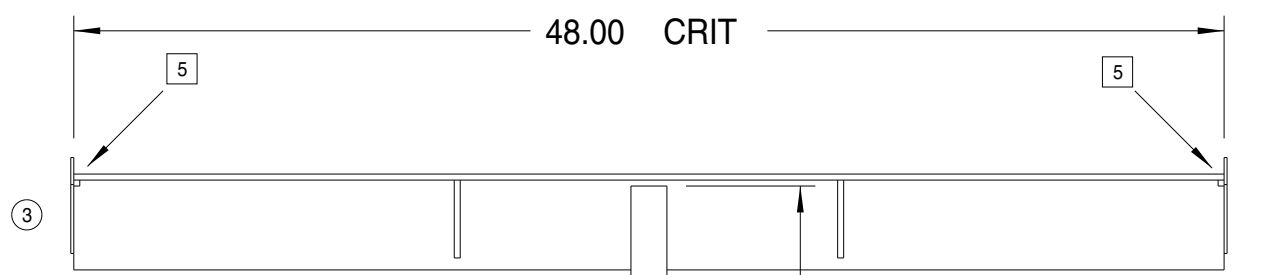
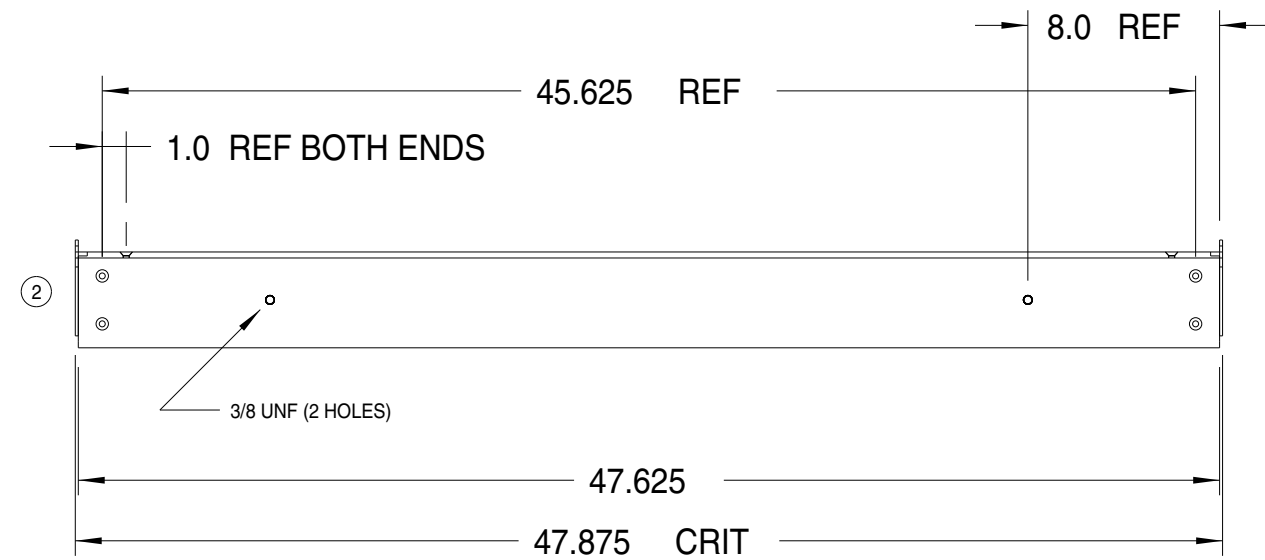


**NOTES**

1. MATCH-DRILL HOLES THAT MOUNT RADIUS TO BASE.
2. BASE AND HANDLE: MAY NEED TO GRIND OUTSIDE CORNER OF ANGLE IRON TO PROVIDE CLEARANCE FOR HINGE PINS.
3. HINGE FACE 'A'  
 BASE: CUT OR GRIND TO CLEAR ADJACENT FACE ON HANDLE.  
 HANDLE: CUT OR GRIND TO CLEAR ADJACENT FACE ON BASE.
4. ADDITIONAL MATERIAL:  
 1/4 UNF OR UNC BOLTS, NUTS, AND WASHERS (8) (LENGTH TO SUIT)  
 3/8 UNF X 1/2 INCH BOLTS AND WASHER (2)
5. GRIND OR NOTCH AS REQUIRED TO CLEAR BASE.
6. ASSEMBLE AND WELD HINGES SUCH THAT HINGE AXIS IS COLINEAR WITH CENTER OF BEND RADIUS. REFER TO RADIUS DETAIL.



**RADIUS DETAIL**



**HINGE PLATE DETAIL**

ITEM	QTY.	PART/MATERIAL-DESCRIPTION	MAT'L-SPEC.
3		HANDLE	ANGLE IRON; PLATE; 1.5 INCH TUBING
2		BASE	ANGLE IRON; 1/8 INCH PLATE
1		RADIUS	4 INCH ANGLE IRON

T MCHENRY DRAWN BY	98/06/30 DATE	<b>BENDING BRAKE</b>	WESTERN CANADA RVATOR
K HOSHOWSKI ENGINEER/CHECKER			PART NO.
RELEASE TO PROD.		SCALE APPROX.	SHEET 1 OF 1
FILENAME			<b>B - BRAKE-1</b>